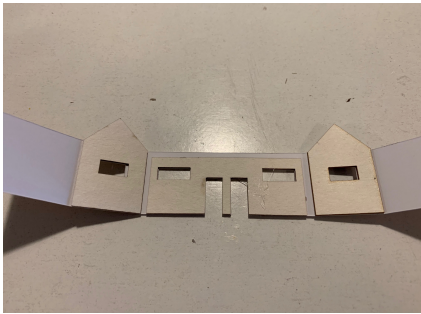
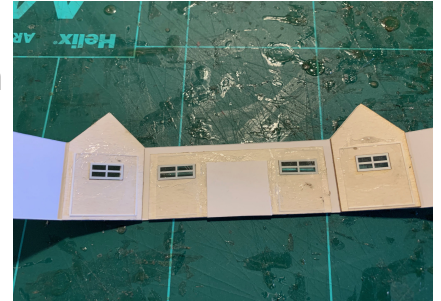


N Scale Toilet

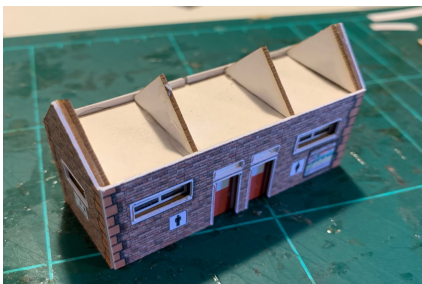
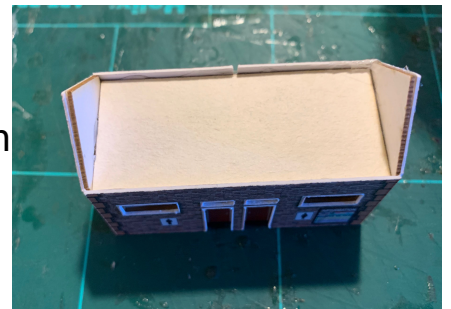
Thanks for purchasing one of my kits,
This kit just requires glue and a brown
felt tip pen.



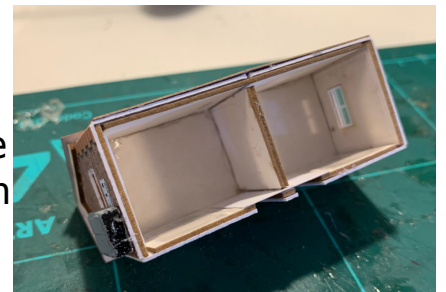
First glue the the window frames as shown left, then glue cut out and glue the windows and doors as shown right..



Locate the two large pieces of plain card and using the shorter one join the walls as shown left, then the larger piece as shown right.



locate the four small roof supports, glue one to each gable and two in the centre as shown left, then glue together the two square pieces and fix underneath as shown right.



Next glue the roof on then the two facia boards as shown right.

