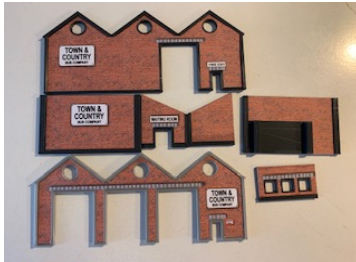


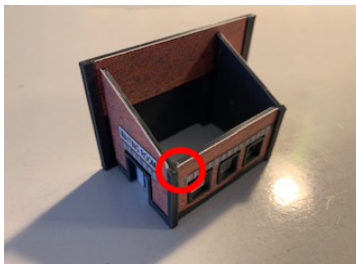
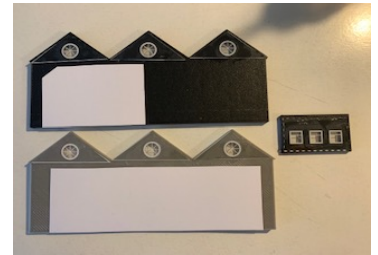
N Scale Bus Station

Thanks for purchasing one of my kits,
This kit just requires Gel glue. Please keep all parts away from children

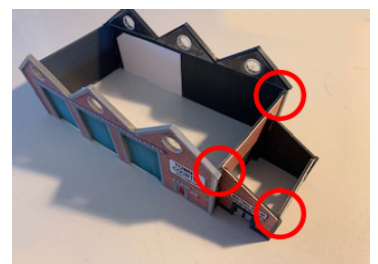
A non super glue Gel glue is recommended



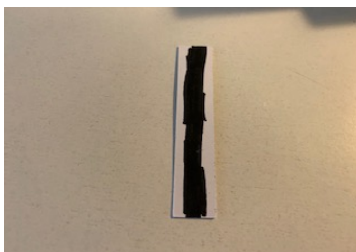
Firstly glue all the card brick panels to the plastic walls shown left, then the windows shown right.



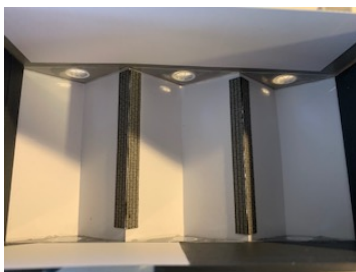
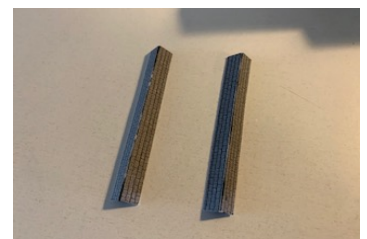
Starting with the waiting room glue the panels as shown left making sure the window section is inbetween the the gable walls, then assemble the main building, again with the ends on the inside.



now glue the waiting room roof on, the best thing about using a Gel glue it will give you wiggle room to get things square, the main roof is in 3 parts, 2x ends and 1x centre.



Whilst that is drying use a black markerpen and colour the white side as shownleft, the using the crease line fold.



Now glue them underneath to join the roofs.