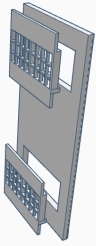


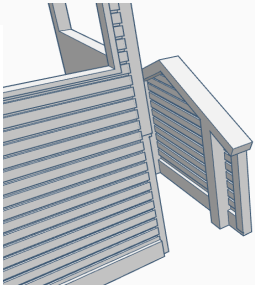
OO SCALE  
SIGNAL BOX



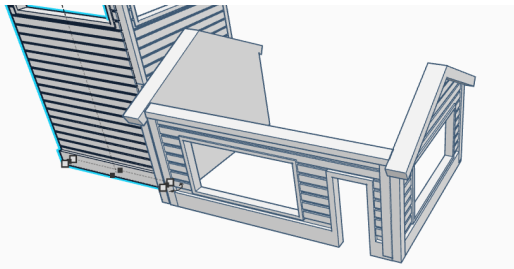
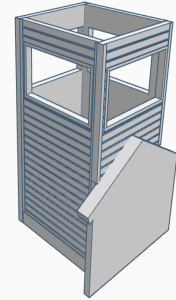
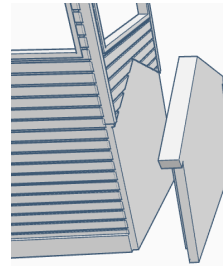
# OO Scale Signal Box



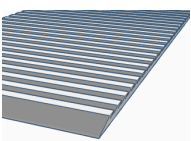
Glue the 7 windows from the back of the window walls, then cut the 2 doors out and glue from behind of the door walls, cut the 7 window clear panels out and glue to each window.



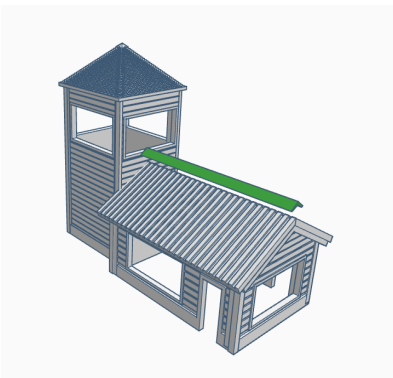
Glue the joining gable as shown to the Tower.



Now glue the walls together, the door walls fix to the inside of the gables as shown left.



Now glue the roof on, I ran a line of glue on top the gables and door walls then left for a few mins to go tacky, note the roof is angled to meet in the middle.



Then finally glue the ridge..



Collall Gel glue is recommended for this plastic. A Gel glue makes assembly easy..