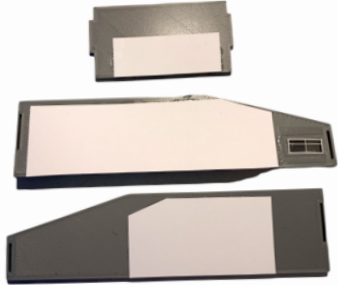


Thanks for purchasing one of our kits, this kit requires scissors and a **GEL** Glue.

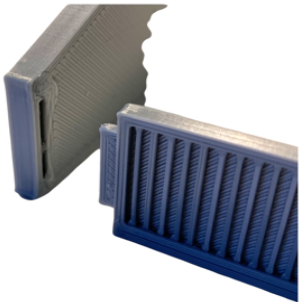
## N Scale Bus Depot



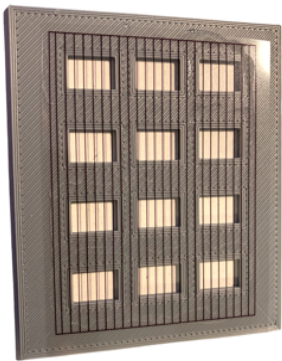
Cut the windows and doors out and glue as shown left..



Run a line of glue in the slots and glue the walls together .



Whilst that's drying cut out and glue the roof window.



Run a line of glue on top of the gables and sides then fix the roof, just a little tip, apply the gel glue then leave it for a few mins before placing the roof.

