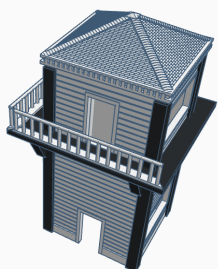
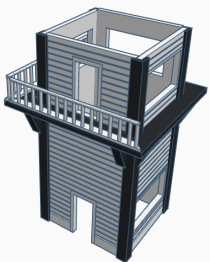
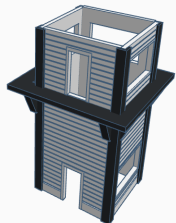
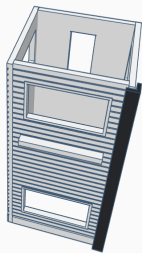
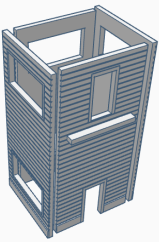
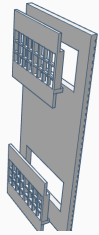
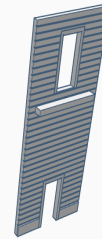


OO SCALE 1:76
SIGNAL BOX

OO Scale Signal Tower

Glue the 6 windows from the back of the 3 window walls, then cut the 2 doors out and glue from behind of the door wall, cut the 6 window clear panels out and glue to each window.



the door wall and one of the window walls has a ridge this is the balcony support so they need to be on opposite sides, if you look at the pic left these panels go on the inside, also make sure the window walls are the right way up, the bottom has a plinth and all the windows will be the same height.

once set enough to handle gently glue the 4 corners on as shown left.

Now run a line of glue on top the 2 balcony supports and push the balcony from the top down on to the supports.

Now glue the railings in place, 2 are shorter and 2 longer.

Now the roof then good to go..



Collall Gel glue is recommended for this plastic. A Gel glue makes assembly easy..