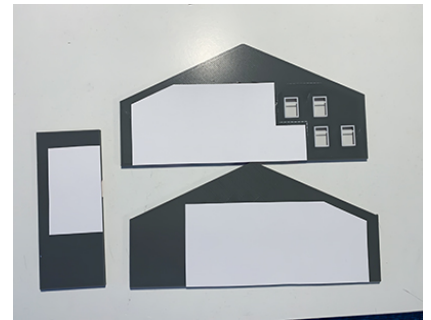


OO Scale Royal Mail Depot

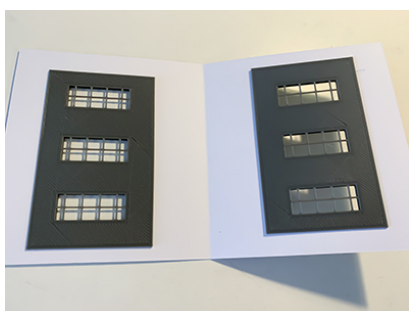
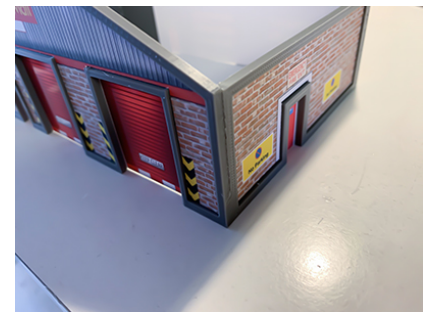
Thanks for purchasing one of my kits,
This kit just requires glue. Please keep all
parts away from children



Glue the card inserts to the
plastic panels shown left, then
cut the doors and windows out
and glue as shown right.



Run a line of **GEL** glue down the
inside edge of the front and back
panels and allow to go tacky,
then put together as shown right
with the side panels on the inside,
make sure all corners are flush.



Glue the plastic roof insets into
the card roof, then cut the roof
windows out and glue smooth
side out. then run a thin line of
glue on top of the front and back
gables, allow to go tacky and fix
the roof.

