

N Scale Garage

Thanks for purchasing one of our kits, this kit requires scissors and a **GEL** Glue.



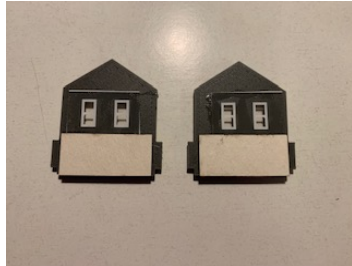
Glue the red brick card inserts to the plastic walls as shown left.



Cut the windows and doors out and fix as shown left..



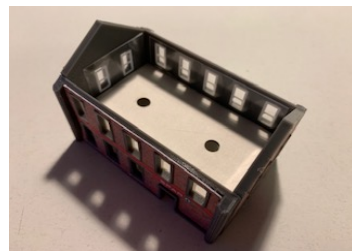
Glue the 2x small pieces of plain card to the inside of the plastic gables as shown left, make sure they are in the middle and flush with the bottom.



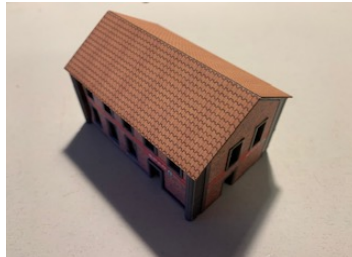
Glue the walls can be glued together.



Run a line of glue on top of the two small pieces of glue you fixed to the gables and place the floor on top of them as shown left, the holes are for LED's if you decide to fit them.



Run a line of glue on top of the gables and sides then fix the roof..



Glue the 2x canopy windows as shown left then the pumps glue in the holes provided.

