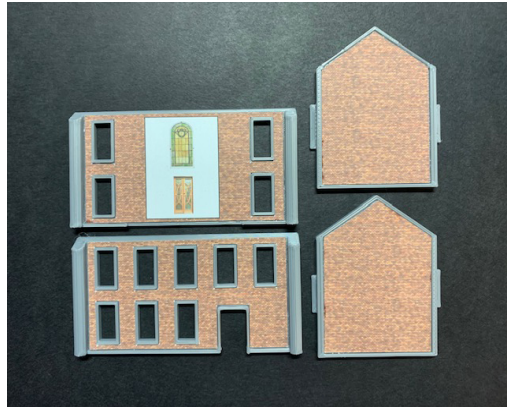




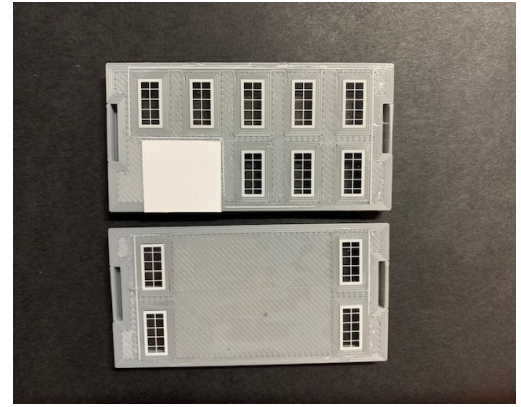
Thanks for purchasing one of our kits,
this kit requires scissors and a
GEL Glue Collall.



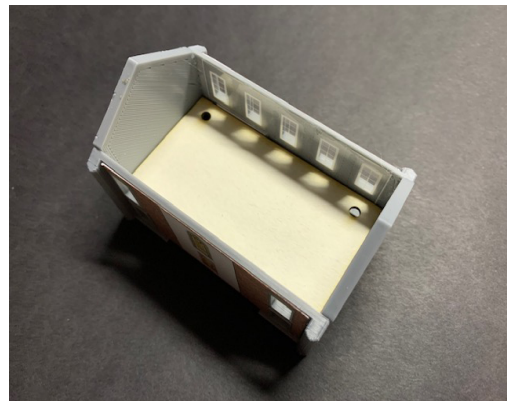
N SCALE BANK/PUB



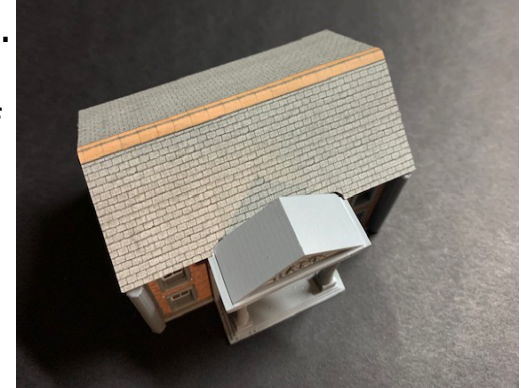
Glue the card panels as
shown left, then cut the
windows and doors out
and glue as shown right.



glue the two small pieces
of plain card to the inside
of the gables, make sure
they are center and flush
to the bottom, then glue
the walls together, on the
pub the conservatory is
fixed to the right side.



Now glue the floor in place.
on the Bank fix the front
entrance and then the roof
as shown right



Now glue the small roof on
the bank, on the pub cut
the sign, window and
curtain out and fix to the
red front section and glue
as shown right.

