

EXPERT RESIN PRINTERS
LASER CUTTERS
FDM PRINTING
PRECISION CARD CUTTERS

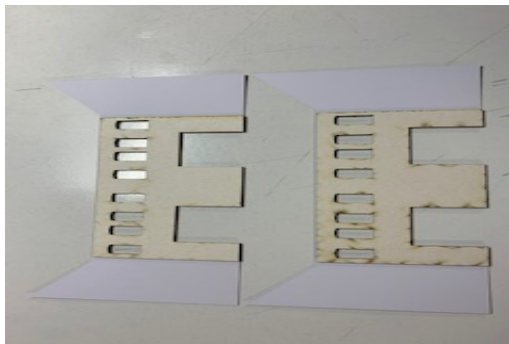
3D-PLUSS

ESTABLISHED
2019
A TAX PAYING UK BUSINESS



Thanks for purchasing one of our kits, this kit requires **GEL** Glue.

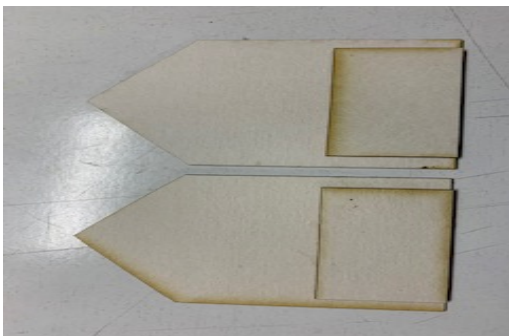
TT scale fire station



Glue the thick card window surrounds to the inside of the printed cards shown left.



Cut the windows and doors out and glue to the thick card.



You will have 3 pieces of thick oblong card, use the two shorter pieces and glue to the middle of the two large gables pieces of thick card.

EXPERT RESIN PRINTERS
LASER CUTTERS
FDM PRINTING
PRECISION CARD CUTTERS

3D-PLUSS

ESTABLISHED
2019
A TAX PAYING UK BUSINESS



Glue the two thick card long oblongs over the doors as shown left.



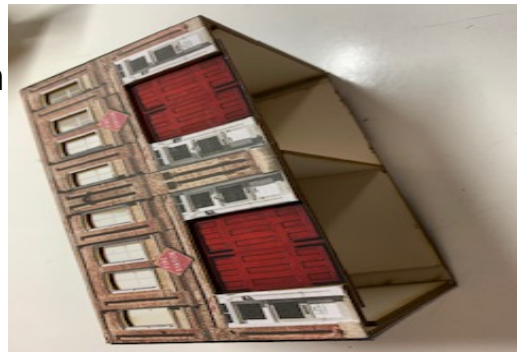
Now we can join the walls together by joining the two halves with the thick plain gables.



Run a line of glue on top the 4 floor supports and place the floor inside, the holes are for LED's if required.



Glue the 2 short gables together and glue as shown left, then the last remaining short oblong is the lower divider seen right.



Glue the roof on then the printed gables and then the 2x barge boards, I use a red felt pen to colour them red.



